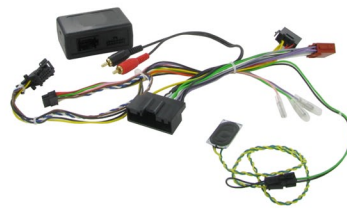


Installation Guide

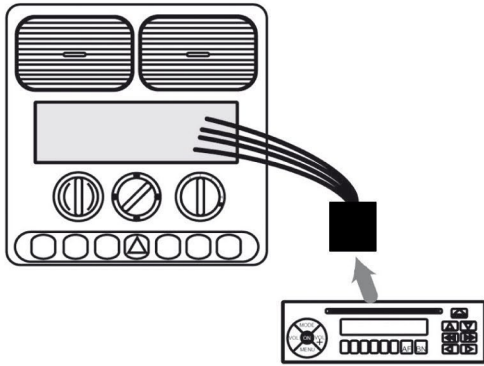
Steering wheel control Interface



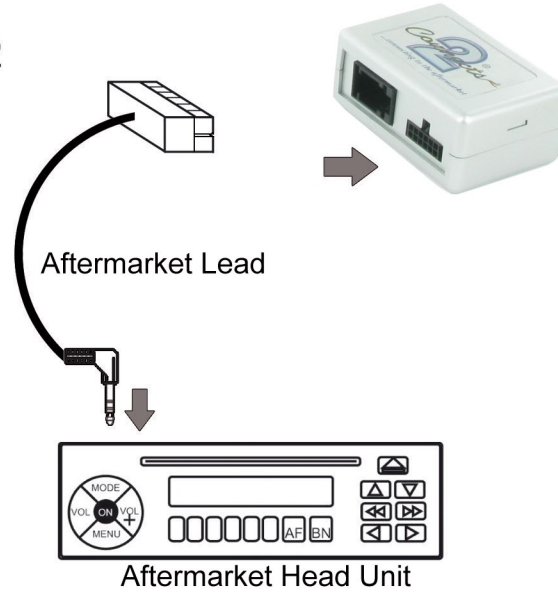
CTSFO006 -
Ford C-Max/Focus 2011>



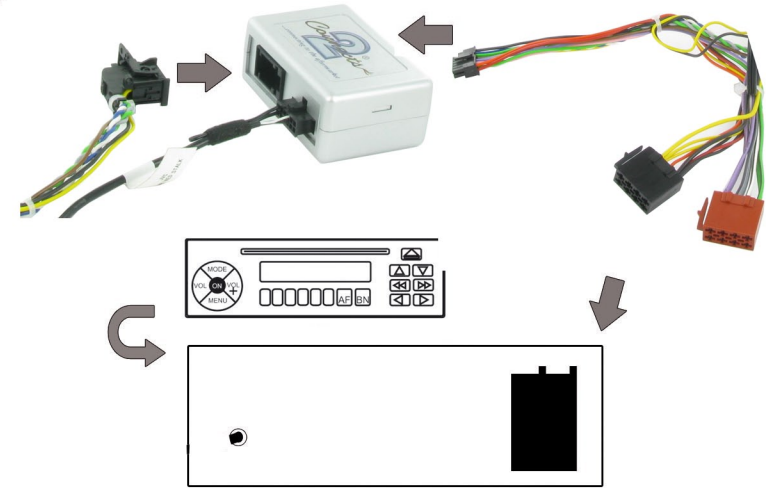
1 Remove Original Head Unit



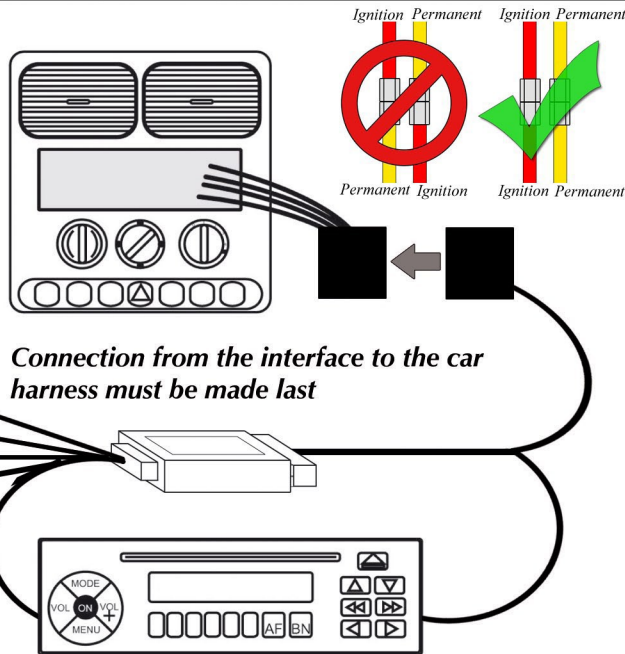
2



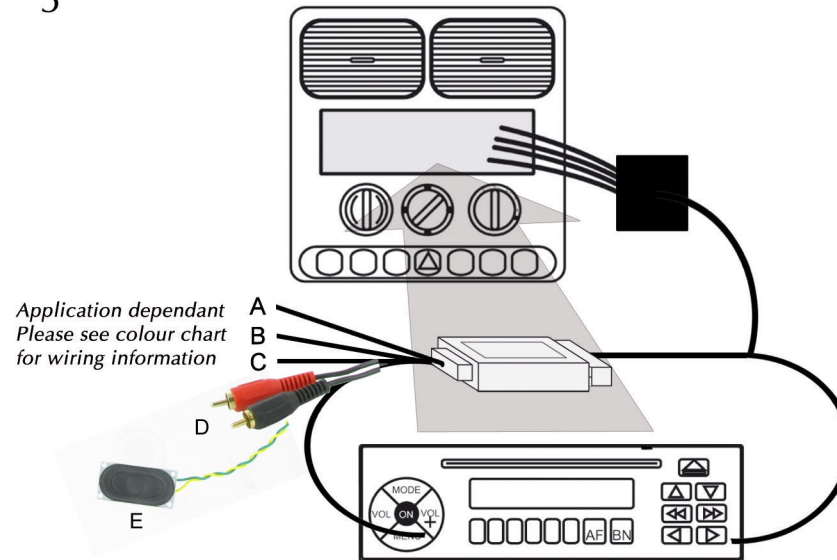
3



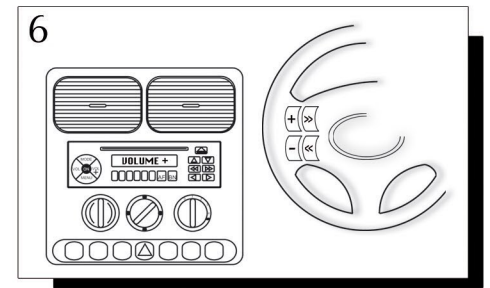
4



5

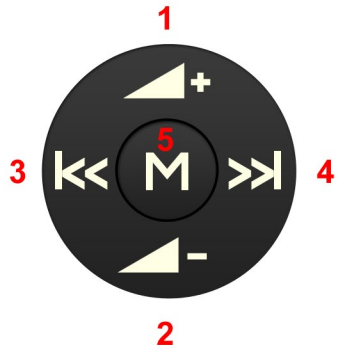


6



- | | |
|-----------------------|--|
| A - Pink Wire | = Speed Pulse |
| B - Green Wire | = Park Brake |
| C - Purple/White Wire | = Reverse |
| D - RCA Leads | = Connect to aftermarket head unit aux in to retain factory aux plug |
| E - Speaker | = Connect to slot on rear of facia plate |

If vehicle display remains blank, push and hold the source button on the steering wheel



- 1 - Volume +
- 2 - Volume -
- 3 - Track Down / Scan Down
- 4 - Track Up / Scan Up
- 5 - Source

1. Press & hold **M (button 5)** for 2 Seconds
2. Press **up/down (Button 1/2)** till clock setting is selected.
Then press **Right Arrow (Button 4)**
3. Press **up/down (Button 1/2)** till Set Date is selected then press **M (button 5)**
4. Once in the date set menu **up/down (Button 1/2)** will change the selected item & **left/right (Button 3/4)** will change which item is selected.
5. *Once Everything is set press M (button 5) to exit.*

Time can be set with buttons on display



Step2



Step3



Step4



Step5